



[www.serenehouse.com](http://www.serenehouse.com)

00020160722

SERENE  HOUSE<sup>®</sup>

## Instruction Manual



**Nebula**

Aroma Diffuser

US

**Please read this manual carefully  
before using the product.  
After reading this manual, please keep  
it in a readily accessible place.**

---

Nebula Aroma Diffuser

Product & Accessories **03** / Operating Instructions **04**

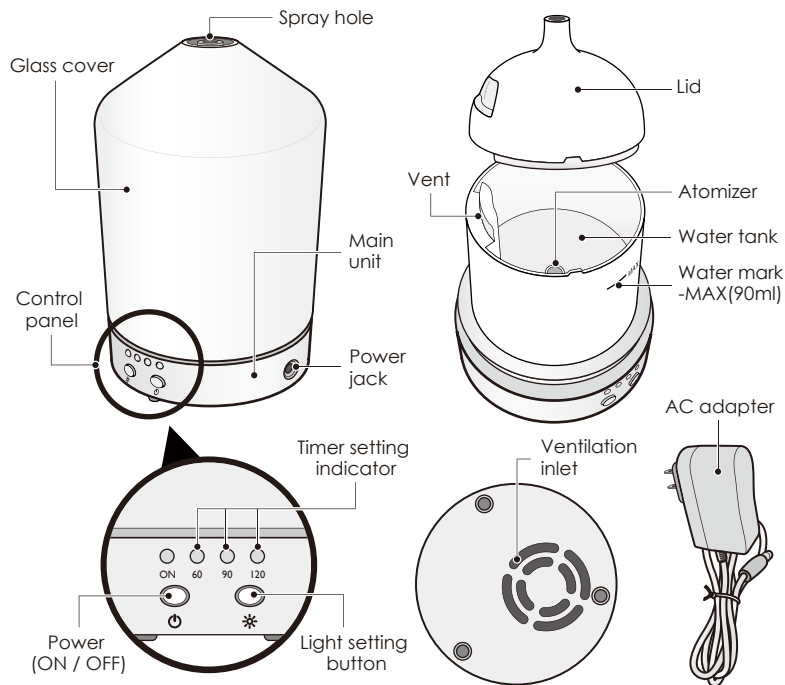
Light Setting Instruction **07** / Time Setting Instruction **08**

Cleaning & Maintenance **09** / Precautions before use **10**

Safety Precautions **11** / Troubleshooting **13** / Specifications **14**

## Product & Accessories

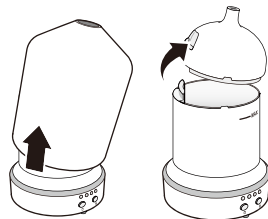
- Please check if all following items are present and if there is any damage before use.



## Operating Instructions

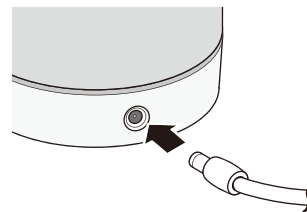
- Always place your Aroma diffuser on a firm, flat and level surface.
- Condensation may occur around the Aroma diffuser when operating in high humidity environment.

1



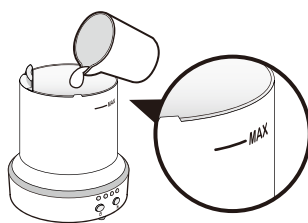
Take off the cover to remove it from the main unit. Remove the lid from water tank.

2



Plug the head of the AC adapter into the power jack at the side of the main unit.

3



Fill water tank to or below maximum (MAX) water mark level. To avoid damage to this device, never fill water exceeding its maximum water mark level.

- After completing the water filling procedure, please wipe off any excess moisture on the water tank.
- Never add water into the vent hole.

Water Recommendations: Remark

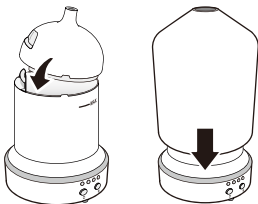
4



Add 5-10 drops of Serene House 100% Essential Oil into the water tank. Cover the tank with lid. Please do not let essential oil drip onto the exterior of Aroma diffuser. If essential oil accidentally drips onto the exterior of the device, wipe clean immediately with a cloth.

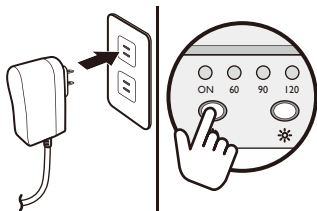
- Never allow water or oil to enter the vent.

5



Place the cover back on the main unit, per diagram. If the lid is not correctly aligned, as a safety feature, the unit will not operate

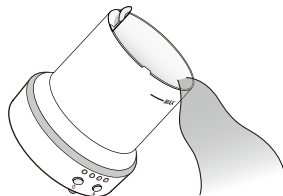
6



Plug AC adapter into a power outlet and press the power button to turn the power on. The built-in LED light and power indicator will be on when the device starts to operate.

- The built-in LED light can be turned off during usage by pressing the light setting button.
- For safety purpose, this Aroma diffuser is programmed to stop operating automatically when it detects the water is below its programmed level.
- To turn off the Aroma diffuser, press the power indicator button for 2 seconds.

7



Please empty the water in the water tank and follow step 1 to 6 when reusing this device.

- For proper handling and maintenance, please refer to the Cleaning & Maintenance section in this manual.

### Caution

- Never connect the power without placing the lid and cover on the unit.
- Do not remove the lid or block the ventilation inlet under the main unit during usage.
- When the device is in operation and there is water in water tank, do not touch the atomizer as personal injury or device malfunction may occur.
- After each use, please make sure to pour out any remaining water in tank.
- For best performance, we recommend Serene House 100% pure natural essential oils with this Aroma diffuser. Use of other essential oils may cause damage to the device.
- Make sure to wipe clean with a cloth if oil drips on the main unit or floor.

### Water Recommendations: Remark

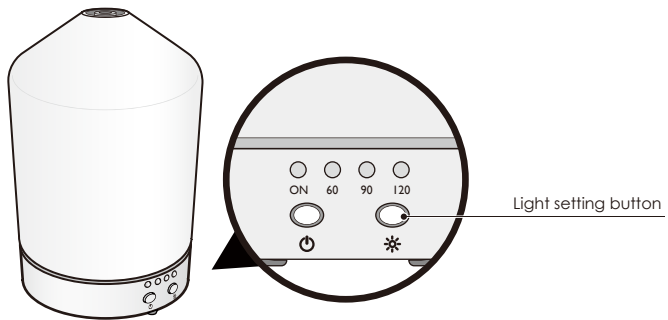
Water Recommendations for Serene House Aroma diffuser. Soft water is best for your Serene House diffuser. You may also use bottled or mineral water. It is important to not use steamed distilled water, as this water had the minerals removed from the water that affects the operation of the diffusers.

Reverse osmosis (RO) water also has less minerals in the water and the diffuser will not be able to diffuse the mist properly and the desired results will not be achieved.

Hard water is also not recommended. This would require that the oscillator be cleaned every time after use when using hard water, because the calcium carbonate from hard water will pile. Also, hard water is too heavy for oscillator to diffuse mist.

## Light Setting Instruction

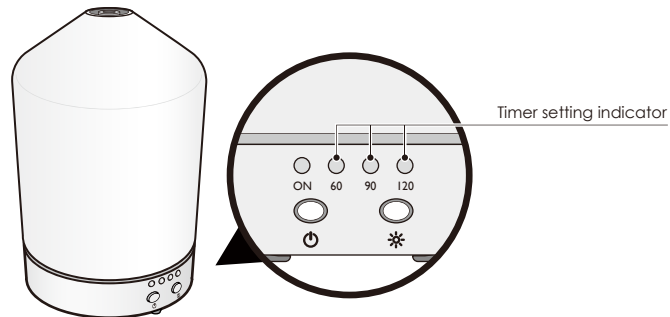
1. To switch on - press the light setting button and the built-in LED light will turn on.
2. 7 light color effectiveness - warm white, green, blue, red, yellow, purple and light white.
3. Fix on a single light color - press the light setting button and the light color will be fixed.
4. To switch off the light - keep pressing the light setting button and at the end of 7-light rotating cycle, the light will turn off.



## Time Setting Instruction

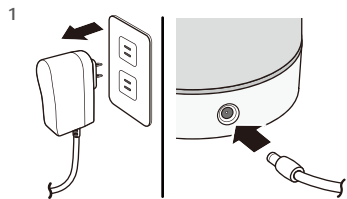
To set usage time of this Aroma diffuser

1. Press the power indicator button for continuous operation.
2. Press the power indicator button once for 60 minute operation. The 60 indicator will go on.
3. Press the power indicator button twice for 90 minute operation. The 90 indicator will go on.
4. Press the button 3x for 120 minute operation.
5. For safety purpose, this Aroma diffuser is programmed to stop operating automatically when it detects the water is below its programmed level.



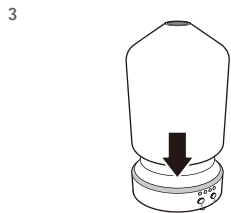
## Cleaning & Maintenance

- Always disconnect the AC adapter from the electrical outlet before cleaning.
- For best atomizing performance, be sure to clean the Aroma diffuser after each use.

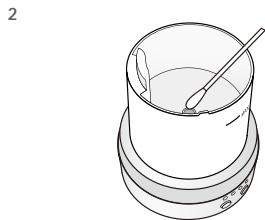


Remove the AC adapter from the electrical outlet and then remove the plug from the main unit.

- To avoid liquid spilling from the water tank, always keep the main unit in an upright position whenever removing AC adapter.



Reattach the lid to complete the cleaning and maintenance procedure.



Remove the lid, empty the water from the tank, add a small amount of warm water (do not exceed 40°C/104°F), and a few drops of neutral cleanser. Use a cotton swab to clean the atomizer and internal surface of the water tank. Gently rinse all the soap out of the water tank after washing.

- Be careful to not allow water to enter the vent.
- Never use acidic cleansers as this may cause malfunction.
- If water accidentally flows into the ventilation inlet, vent or control buttons, please allow internal mechanism to dry thoroughly (at least 6 hours) before the next use, otherwise this may cause the device to malfunction.

## Precautions before use

- Please read all instructions before using the product. Use it safely and correctly.
- This product is a vaporized fragrance diffuser and uses ultrasonic vibration technology to generate fragrant vapors, it also has a LED lighting function.
- Make sure to read and follow the "Cleaning & Maintenance" instructions in this manual for cleaning and maintenance; improper maintenance may cause malfunctions.
- This product is manufactured using the ultrasonic atomization principle, and while it does add slight humidity to the air, its primary purpose is as a fragrance diffuser.

## Notes on the use of oils

For best performance of this Aroma diffuser, we recommend using Serene House 100% pure and natural essential oil.

- Essential oils are highly concentrated oils. Use with caution.
- Do not spill the oils as they may damage plastic objects and furniture.
- Children and pets are very sensitive to essential oils. Use with caution.
- Do not ingest essential oil.
- All Serene House essential oil have child proof bottle.
- Stop using the product and open the windows for ventilation if you have difficulty breathing due to allergic reaction.
- Be sure to use appropriate amounts of essential oil.
- If you have any special physical conditions, such as pregnancy, lung failure, cancer, epilepsy or other illnesses, please consult your doctor before using essential oils.

## Safety Precautions

For safety, please be sure to comply with following instructions:

- The precautions listed in this manual are to ensure safe and proper use of this product by the user, and to avoid any danger or loss that might occur to the user or others.
- "WARNING" contains important safety instructions. Be sure to follow these instructions.

### WARNING



- Stop using the product immediately and unplug the AC adapter once smoke, smell, unusual sounds or other anomalies occur.



- Do not modify, fix, or dismantle this product, as fire, electric shock, or damage may occur.



- When the product is at the end of its life, we recommend disposal at a collection point for the recycling of electrical and electronic equipment, rather than with household waste. The symbols on the product, instruction manual and packaging allow for proper sorting and disposal.



- **KEEP OUT OF REACH OF CHILDREN AND PETS**
- **FOR INDOOR USE ONLY**
- Please use a DC 24V / 500 mA adapter, otherwise the device may malfunction.
- The AC adapter will heat up when the product is operating and it is normal.
- Only the included AC adapter may be used with the product, using other AC adapter may result in fire.
- Do not connect the AC adapter to the main unit during installation, as electric shock and injury may occur.
- The product should always be unplugged and the water tank should always be empty when moving the product or when the product is not in operation.
- When unplugging the AC adapter from the outlet, do not pull on the wire. Hold the AC adapter firmly and then unplug it, or else damage or injury may occur.
- Please avoid dripping the essential oil onto the exterior of the product or onto furniture. If essential oil dripping accidentally occurs, wipe off immediately to avoid discoloration of the exterior of the product or the furniture.



- The product must be disconnected from the electrical outlet before use and maintenance.
- Do not handle the main unit and AC adapter with wet hands, or let water or other liquids stick to or spray onto them, as this may result in an electric shock.
- Do not use the product when electric cord or plug is damaged or the product has been accidentally hit, dropped, broken, or damaged in any way.
- Do not use the product when it has been accidentally dropped, hit, or broken as this may cause the product to short-circuit or malfunction.
- Do not bend, heat, or place heavy objects on the power cord as fire or malfunction may occur.
- Do not deliberately place your eyes, nose or mouth close to the fragrance mist emitted as this may cause physical discomfort.
- This product is not a toy. Do not let children use this product. Keep out of reach of children as electric shock and injury may occur. Children should be properly supervised to ensure that they will not play with this product at all times.
- This product is not intended for use by persons (including children) with reduced physical, sensory, or mental capabilities, or lack of experience and knowledge, unless they have been given supervision or instruction concerning use of the product by a person responsible for their safety.
- To avoid fire, electric shock, personal injury or product damage, do not place the product in the areas listed below:
  - \* In direct sunlight or next to a heating apparatus.
  - \* In dusty places.
  - \* On tilted, unstable or uneven surfaces.
  - \* Places full of smoke or next to gas stoves.
  - \* Places with an ambient temperature of greater than 40°C/104°F; keep the product away from sources of ignition.
  - \* On top of or next to electrics (TVs, stereos, refrigerators, etc) .
  - \* Do not place the product on soft surfaces such as carpet, otherwise the ventilation inlet at the bottom may be blocked, causing the device to not function correctly.
- Do not remove the lid or put your finger or other objects into the water tank while the product is in operation as water leakage, malfunction or personal injury may occur.

## Troubleshooting

If you experience unsatisfactory operations, please follow our troubleshooting guidelines listed below.

### Machine does not operate

- Check the adapter  
→ Make sure the adapter is fully and correctly plugged into the electrical outlet.
- Power cord not connected to the main unit  
→ Be sure plug is inserted into the body socket correctly.
- The power is correctly connected but the device still does not operate  
→ Check whether the water tank contains any water and then recheck that the ON/OFF switch is on. Check that the water level in the tank does not exceed the maximum water level line (MAX); if this is the case, empty out the excess water.

### The product does not atomize or does not atomize effectively

- Dirty atomizer  
→ Perform maintenance according to the 'Cleaning & Maintenance' section of this manual.
- Placement of the product  
→ Place on a firm, level, and stable surface.
- Check the water volume  
→ Make sure the water does not exceed its designated water mark level.
- The lid does not attach securely to the main unit  
→ Reattach the lid according to the procedure in the 'Operating Instructions' section of this manual.
  - See water types/ recommendations above.

Do not attempt to dismantle or repair the product by yourself. If the unit still does not operate satisfactorily, please visit our website [www.serenehouse.com](http://www.serenehouse.com), and click link "Support", or contact our customer service.

## Specifications

- Fragrance results may vary depending on ventilation, temperature, humidity, and the size of space.

### *Nebula*

---

Model code:	AA06G
Item no:	151204001
Atomization mode:	Ultrasound
Suggested room size:	10 ~ 15 m <sup>2</sup> (100~150 sq ft)
Ultrasonic frequency(MHz):	2.4 ± 10 %
Water tank capacity:	90 ml ( 3 fl. oz. )
Power input:	DC 24V ,10W
Product size:	∅ 9 cm x 14.3 cm H
Main unit weight:	≐ 480 g
Operation mode:	Continuous mode
Accessories included:	Adapter / Manual / Warranty card
Design team:	SERENE HOUSE
Made in China	

---

This device complies with Part 18 of the FCC Rules.



RoHS  
compliant



Patented Product