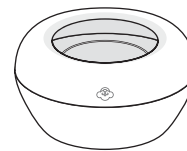


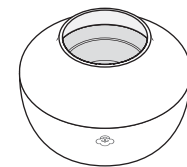
Serene Pod® Scent Diffuser

- This instruction is suitable for both Luna and Dawn.



Luna

Inspired by the combination of a treasure chest and the moon, LUNA expresses the simple design not only works with our Serene Pod®, but also provides a smooth visual effect that blends into your home decoration.

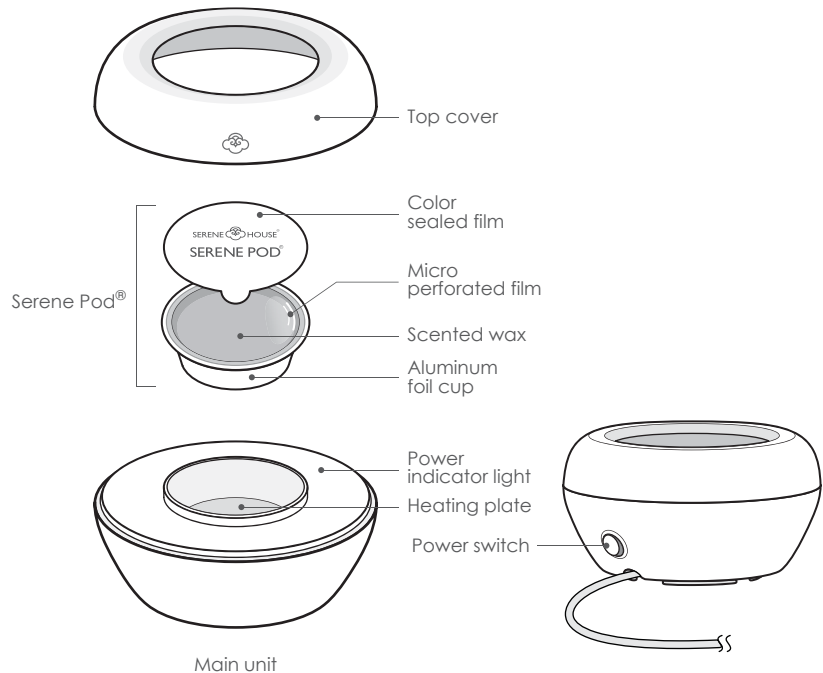


Dawn

Utilizing the materials, DAWN emits a warm light through a semi-transparent cover, just like the start of a new day when the sun is shining through the clouds with a scented breeze.

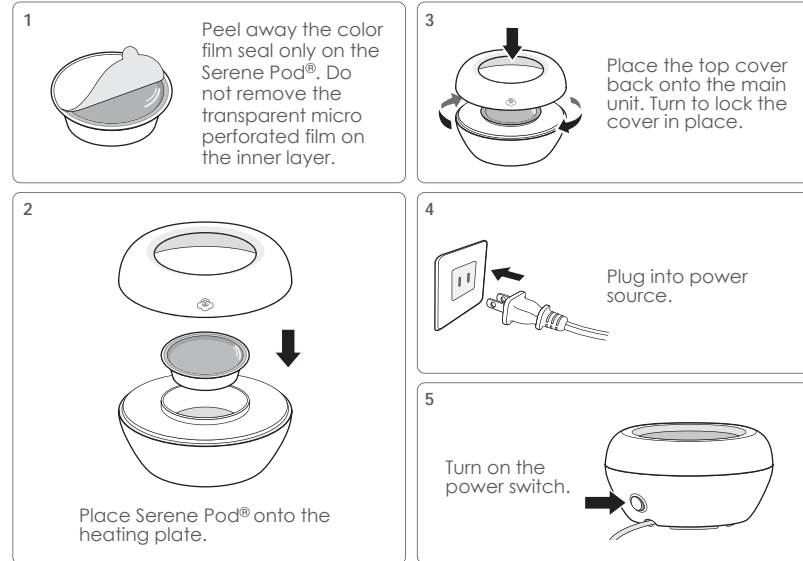
Product & Accessories

- Serene Pod® is required to be used with this product. Serene Pod® is sold separately.



Operating Instructions

- Please remove all packaging before use.

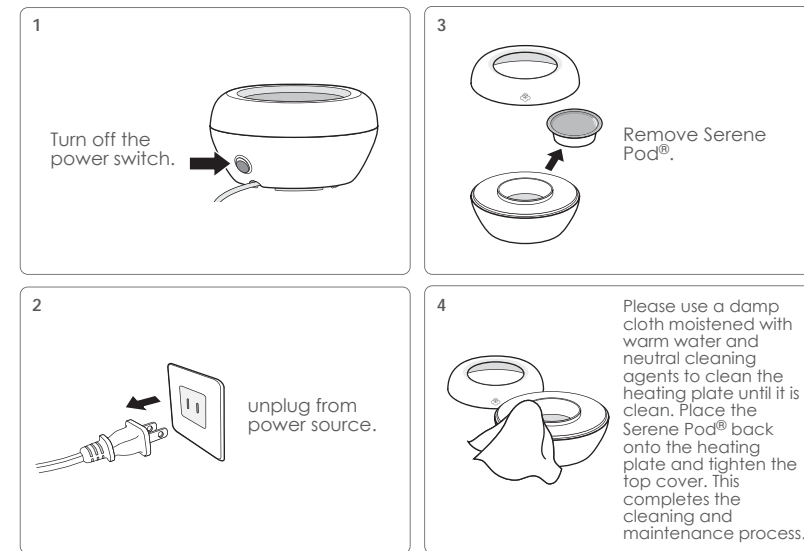


Caution:

- Only Serene Pod® from SERENE HOUSE can be used with this product; do not heat liquids or other objects in the heating plate.
- Serene Pod® can be heated repeatedly. If the scent fades or the diffusing performance drops, please consider replacing the Serene Pod®. The Serene Pod® is a consumable item; please contact your local distributor for purchase.
- Do not move or touch when this product is in use. Allow the wax inside Serene Pod® to cool thoroughly into a solid form before handling the device or Serene Pod®.
- Unplug from power source when not in use.
- Always place this wax warmer on a firm, flat and level surface.

Cleaning & Maintenance

- Always disconnect the product from its power source prior to cleaning & maintenance.
- Allow to dry thoroughly before use.
- Never soak or wash this product directly as it may cause mechanical malfunction or danger.
- Never use acidic cleansing agents as it may cause malfunction to the product.
- Please perform cleaning & maintenance at least once a week; failing to do so may cause the product to malfunction. Please maintain it on a regular basis.



Specifications

- Fragrance results may vary depending on ventilation, temperature, humidity, and the size of space.

Luna

Model code :	131205013 White / 131205014 Black
Suggested room size :	15 ~ 35 m ² (161.4 ~ 376.7 sq ft)
Power input :	120 V ~ , 60 Hz , 7.5W
Product size :	Ø 12.9 cm x 7.1 cm H (Ø 5.1 in x 2.8 in H)
Main unit weight :	305 g (10.8 oz)
Operation mode :	Continuous mode
Accessories included :	Warranty card
Designer :	Cheng-Yen Chou
Design supervised by :	Carsten Jörgensen
Design :	Taiwan
Made in China	

Dawn

Model code :	131205015 White / 131205016 Black
Suggested room size :	15 ~ 35 m ² (161.4 ~ 376.7 sq ft)
Power input :	120 V ~ , 60 Hz , 7.5W
Product size :	Ø 12.9 cm x 9.5 cm H (Ø 5.1 in x 3.7 in H)
Main unit weight :	340 g (12 oz)
Operation mode :	Continuous mode
Accessories included :	Warranty card
Designer :	Fen-Ju Lin
Design supervised by :	Carsten Jörgensen
Design :	Taiwan
Made in China	



Patent Product

IMPORTANT SAFETY INSTRUCTIONS

INSTRUCTION PERTAINING TO A RISK OF FIRE, ELECTRIC SHOCK OR INJURY TO PERSONS SAVE THESE IMPORTANT SAFETY INSTRUCTIONS

WARNING

When using electric products, basic precautions should always be followed, including the following:

- A.** Read all instructions before using the product.
- B.** Do not put fingers or hands into the product.
- C.** To reduce risk of injury, close supervision is necessary when used near children.
- D.** Do not use the appliance when the power cord was damaged.
- E.** Failure to follow instructions could result in a fire hazard. The appliance is only to be used with the recommended vaporizing medium. The use of other substances may give rise to a toxic or fire risk. Do not immerse this appliance in water. This appliance is for household use only.
- F.** This Scent Diffuser has a polarized plug (one blade is wider than the other) as a safety feature. This plug will fit into a polarized outlet only one way. If the plug does not fit fully into the outlet, reverse the plug. If it still does not fit, contact a qualified electrician. Do not attempt to defeat this safety feature.
- G.** A short power-supply cord is to be provided to reduce risks resulting from becoming entangled in or tripping over a longer cord.
- H.** Extension cords are available and may be used if care is exercised in their use.
- I.** If an extension cord is used, the marked electrical rating of the extension cord should be at least as great as the electrical rating of the appliance, if the appliance is of the grounded type, the extension cord should be grounding -type 3-wire cord. The longer cord should be arranged so that it will not drape over the counter top or table top where it can be pulled on by children or tripped over unintentionally.

FOR ADULT USE ONLY. THIS IS NOT A TOY AND IS NOT INTENDED FOR USE BY CHILDREN. KEEP OUT OF REACH OF CHILDREN.

Precautions for Use

- Please read all instructions before using the product. Use it safely and correctly.
- Be sure to handle this product with care to avoid impacts or drops.
- If you have any special physical conditions, such as pregnancy, lung failure, cancer, epilepsy, or other illnesses, please consult your doctor before use.


Precautions for Use of Serene Pod®


- Do not remove or damage the transparent micro perforated film of the Serene Pod® in order to avoid spillage of melted scented wax.
- Please do not touch Serene Pod® when it is being heated to avoid accidental burns.
- Please keep children and pets away from Serene Pod® to prevent accidental ingestion.
- Serene Pod® is not edible; please do not eat it.
- Stop using the product and open the windows for ventilation if you start to feel uncomfortable.
- Replace with a new Serene Pod® to ensure best scent ability if the aluminum foil cup of Serene Pod® is deformed in any way (including the bottom).


Safety Precautions


Make sure to follow the instructions below to ensure safe usage:


- The precautions listed in this manual are to ensure safe and proper use of this product by the user, and to avoid any danger or loss that might occur to the user or others.
- "WARNING" contains important safety instructions. Be sure to follow these instructions.

-  • Stop using the product immediately and unplug the AC adapter once smoke, smell, unusual sounds or other anomalies occur.

-  • Do not modify, fix, or dismantle this product, as fire, electric shock, damage or injuries may occur.

-  • When the product is at the end of its life, we recommend disposal at a collection point for the recycling of electrical and electronic equipment, rather than with household waste. The symbols on the product, instruction manual and packaging allow for proper sorting and disposal.

-  • Please use the proper voltage as required by the product.
- When this product is not used for long periods of time, make sure to unplug it from the power source and remove Serene Pod® from the heating plate; failure to do so may result in electric shocks or malfunction.
- The product must be disconnected from the power source prior to cleaning and maintenance.
- Once all power sources are disconnected, allow Serene Pod® to cool thoroughly into a solid form before handling, cleaning and maintenance.
- If the liquid wax accidentally dripped onto objects such as the device or the floor, wipe clean with a damp cloth immediately to avoid discoloration of the exterior of the product or the furniture.

-  • Do not use the product when cord or plug is damaged or the product has been accidentally hit, dropped, broken or damaged in any way as such actions may cause problems such as electrical shocks or short circuiting.
- Do not operate this product with wet hands, or allow water or other liquids to drip or spill onto the product as these may cause electric shock or injuries.
- Do not power on the device when there is no Serene Pod® in the heating plate, doing so may cause the product to malfunction.
- Do not put your finger or any other objects into the heating plate while the product is in use, doing so may cause personal injuries or product malfunction.
- This product is not a toy. Do not let children use this product. Keep out of reach of children as electric shock and injury may occur. Children should be supervised to ensure that they do not play with the product.
- To avoid fire, electric shock, personal injuries or product damage, do not place the product in the areas listed below :
 - Under direct sunlight or high temperature environments, and keep away from fire sources
 - Places with high pressures or around combustible objects.
- Do not bend, heat, or place heavy objects on the power cord as fire or malfunction may occur.

Troubleshooting

When the product is suspected of malfunctioning, please confirm the following items before sending it in for maintenance :

Machine does not operate

- Plug is not properly inserted into the power source
→ Please make sure that plug is properly inserted into the power source.

- The power switch is not properly switched on
→ Please check and make sure the power switch is properly switched on.

Poor Fragrance Emission

- The scent fades or the transparent micro perforated film is damaged
→ Please replace the Serene Pod® with a new one.

- The heating plate is dirty
→ Perform maintenance according to the Cleaning & Maintenance section of this manual.

Do not attempt to dismantle or repair the product by yourself. If the unit still does not operate satisfactorily, please visit our website www.serenehouse.com, and click link "Support", or contact our customer service.

SERENE  HOUSE®

Instruction Manual



Serene Pod® Scent Diffuser

Luna • Dawn

US